

**:: Available  
For Lease**

# Affordable East-Side Office Space

1711 S. Longfellow | Wichita, KS

## **Building Features:**

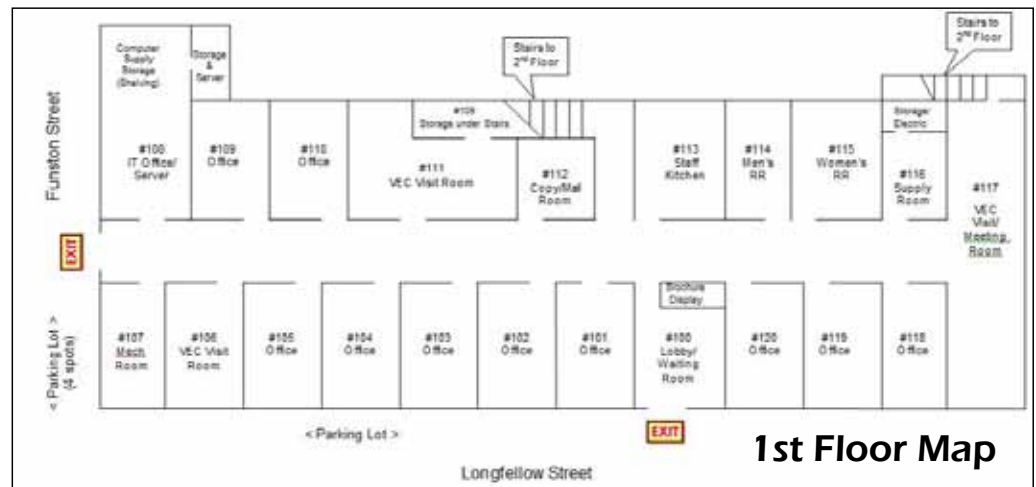
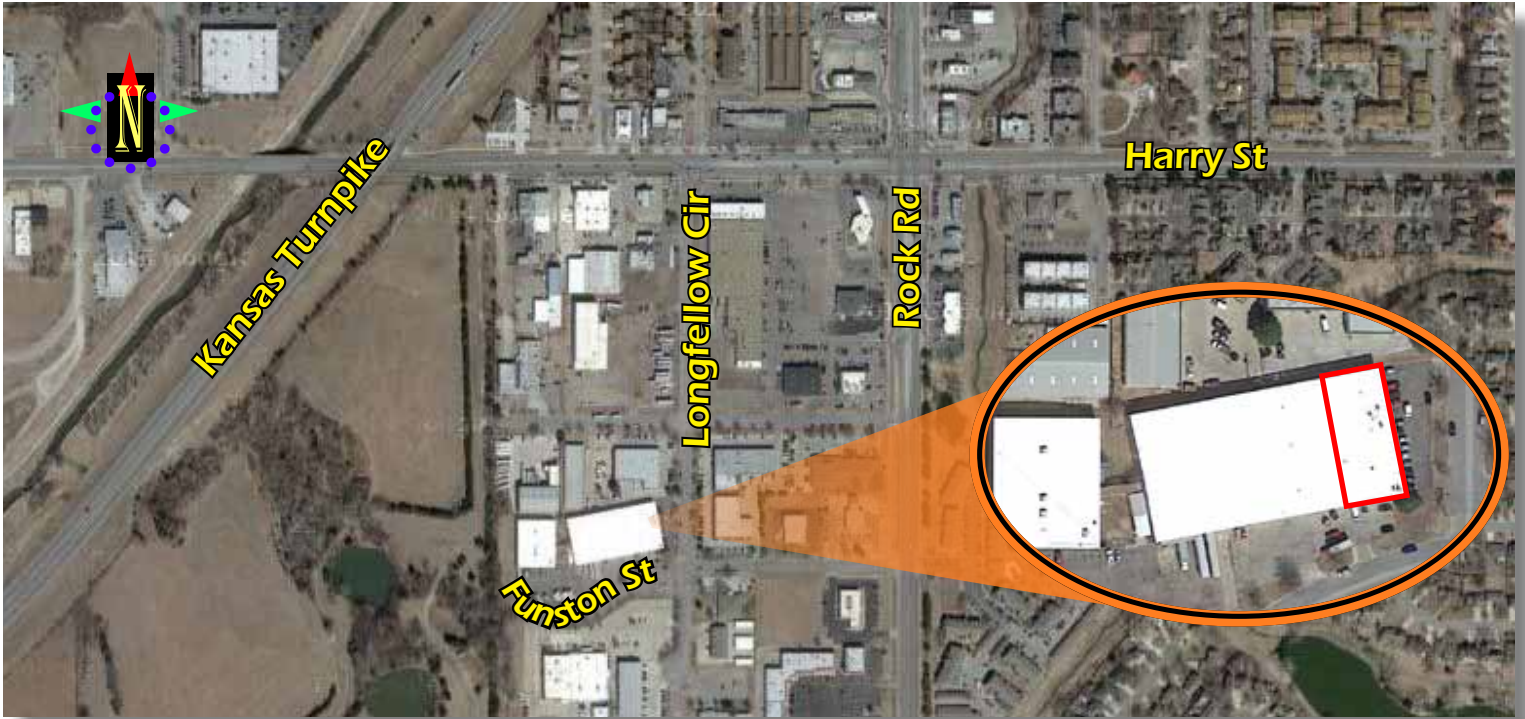
- 9,000 Sq. Ft. of Quality Office Space
- Functional Floor Plan
- Convenient Access to Kellogg (US-54)
- Ample Door-Side + Street Parking
- Fire Sprinkler System
- Close to Restaurants, Services, and Banks



Quality Office Space for Lease  
Near Kellogg (US-54)

**9,000 Sq. Ft. Available**  
**Lease Price: \$9.50/Sq. Ft.**  
Modified Gross

For Information Contact:  
Carl Hebert, CCIM  
316-618-1100  
cjhebert@insitere.com



**Available For Lease** | **Affordable East-Side Office Space**  
**1711 S. Longfellow | Wichita, KS**

**InSite**  
 Real Estate Group  
 608 W. Douglas, Suite 106  
 Wichita, KS 67203